



All Rights Reserved

Materials and specifications are subject to change without notice.
Featured machines in photos may include additional equipment.
See your XCMG dealer for available options.

www.xcmg.com

XUZHOU CONSTRUCTION MACHINERY GROUP IMP. & EXP. CO., LTD

Add: No.1, Tuolanshan Road, Xuzhou Economic Developing Zone, Jiangsu, China 221004



XC948

WHEEL LOADER





INTRODUCTION OF XCMG

Founded in 1943, XCMG is a multinational corporation with the most comprehensive range of competitive, influential products in the construction machinery industry. Our business covers eight key areas: construction machinery, heavy trucks, mining machinery, sanitation machinery, machinery components, construction, finance, and the ICT industry.

XCMG has established a global R&D network with a total of six centers in China, the US, Germany, Brazil and India, with China national technology center at its core. In addition to a number of manufacturing bases in China, the US, Germany, the Netherlands, Poland, Austria, Brazil, India, and Uzbekistan, we possess two complete machine brands (XCMG, Schwing), and several component brands including FT, AMCA. It is the strength of this global R&D network and manufacturing operations that has made XCMG the industry leading global construction equipment manufacturer that it is today.

For more than 30 years, XCMG has been sowing the seeds of overseas development as the No. 1 exporter in China's construction machinery industry. Today, we have 42 branches and offices, 315 distributors, 526 contractors in 188 countries and regions worldwide and are still growing rapidly.

XCMG FOR YOUR SUCCESS

No. 1 **TOP2** **3rd**

Exporter in China's Construction Machinery
For more than 30 years, XCMG is the No. 1 exporter in China's construction machinery industry.

China's Machinery Manufacturers
2nd in the list of China's Top 100 Machinery Manufacturers.

In the world
XCMG is the 3rd largest construction machinery company in the world.

For more than 30 years, XCMG has been sowing the seeds of overseas development as the No. 1 exporter in China's construction machinery industry. Today, we have 42 branches and offices, 315 distributors, 526 contractors in 188 countries and regions worldwide and are still growing rapidly.

OVERVIEW

- ▶ XC948 wheel loader is a new generation of special lifting machine built by XCMG Construction Machinery Co., Ltd., a new type of loader developed and designed through extensive market and technical research. With the characteristics of high performance and streamlined appearance, In terms of reliability, safety, comfort and maintainability, it has been greatly improved compared with the previous generation.
- ▶ XC948 is equipped with brand engine, XCMG automatic transmission, XCMG dry axle ,AC cab. The whole machine has significant advantages in terms of reliability, energy saving, high efficiency and comfort, and has reached the international advanced level.



PERFORMANCE AND FEATURES

Powerful and reliable

- ▶ It adopts a brand turbocharged engine and has a desert air filter with three stages of filtration, which can adapt to dusty working conditions simple mechanical pump, high reliability, and strong power; the engine not only has high reliability and high adaptability It also has the advantages of low fuel consumption and low emission.
- ▶ It can be equipped with a low-temperature starting device. It is specially designed and manufactured for the working conditions of construction machinery. quality product.
- ▶ It adopts special reinforced drive axle for construction machinery, with stable quality, reliable performance and convenient maintenance.
- ▶ Using XCMG gearbox assembly, the transmission efficiency of the high-energy capacitive torque converter is higher, the planetary power shift gearbox is classic and reliable, combined with the 5-ton loader high-torque drive axle, to meet the needs of high-strength, high-load environment operation. The upgraded drive train has the advantages of high reliability, long service life, high transmission efficiency, light gear shifting and smooth bonding. Dustproof and high-flow respirators are applied to the gearbox and drive axle, which are easy to maintain, improve the cleanliness of the parts inside, reduce wear and improve reliability.
- ▶ The bucket is made of high-strength wear-resistant plate, and the bucket teeth are made of internationally renowned brands, which are stronger and more durable.
- ▶ The hydraulic system is guided by double-pump confluence and load-sensitive priority steering to improve operating efficiency, make full use of engine power, and save energy; Equipped with hydraulic oil dispersion, it can effectively reduce hydraulic system failure.
- ▶ The bucket is made of high-strength wear-resistant plate, and the bucket teeth are made of internationally renowned brands, which are stronger and more durable.



Comfort Operation

- ▶ XCMG's new micro-pressurized cab large space, wide field of view and good sealing; high-performance shock absorber to connect with the frame, which greatly reduces the vibration of the cab; airbag shock-absorbing compound control seat, comfortable operation intelligent temperature control High-power heating and cooling air conditioner, the operating temperature is suitable.
- ▶ The surrounding blind area is small, and you can easily see the rear of the machine and the edge of the bucket



Easy Maintenance

- ▶ The new digital combination meter, the vehicle running status and various types of information at a glance.
- ▶ The whole machine adopts the ground level or platform inspection and maintenance, and pays attention to the space scope of the maintenance area, so that the maintenance space always maintains three-point contact, ensuring the safety and convenience of maintenance and daily inspection.
- ▶ Various maintenance points such as oil level inspection, oil addition and grease filling are arranged in easily accessible parts, and the maintenance and replacement of air filter element, electrical equipment, etc. can be easily carried out.
- ▶ The hood adopts large side door and upturned skeleton structure design, the side door opening angle is large, the rear gear cover can be opened, the engine and radiator are overhauled, and the maintenance is easy and convenient.
- ▶ Service brake adopts four-wheel brake with gas top oil caliper disc, which has the advantages of stable braking, safety and reliability, simple structure and convenient maintenance.
- ▶ The afterburner pump is equipped with a dust-proof and high-flow respirator, which is easy to maintain and improves the cleanliness of the afterburner pump and other components.
- ▶ All hinge pins are lubricated with a dust-proof structure, which can effectively prevent dust and protect grease from pollution, providing reliable protection for hinge pins and bushings, Centralized lubrication system is equipped as standard to reduce maintenance time.



High Reliability

- ▶ Structural parts and connecting rod mechanisms focus on the overall structural strength, through finite element analysis and load spectrum-based optimization design of heavy loader structural parts and fatigue test verification;reducing stress concentration parts, eliminate local weak points, and fully ensure the strength of structural parts Withstands repeated torsional damage to structural members from rough roads.
- ▶ The layout of the front and rear frames is reasonable, the structure is simple, and the important load-bearing parts are strengthened to ensure the overall strength.
- ▶ Increase the distance between the upper and lower hinge pins of the hinge center, disperse and reduce the stress of the hinge pins, and improve the service life of the bearings.
- ▶ The front frame has good rigidity and provides a solid mounting base for the boom and oil cylinder, which can absorb strong torsion, impact and loading force.
- ▶ The welding toe fatigue life improvement technology is adopted to prevent the welding seam of the whole vehicle from cracking under severe working conditions.
- ▶ Powder electrostatic coating and special anti-corrosion technology solve the problem of corrosion.
- ▶ The crossbeam of the boom adopts a rectangular tube structure, which can effectively avoid stress concentration, welding defects, etc., and improve the structural strength.
- ▶ All kinds of pin shafts adopt special heat treatment process of special materials, which have high strength, good wear resistance and long service life.



High efficiency

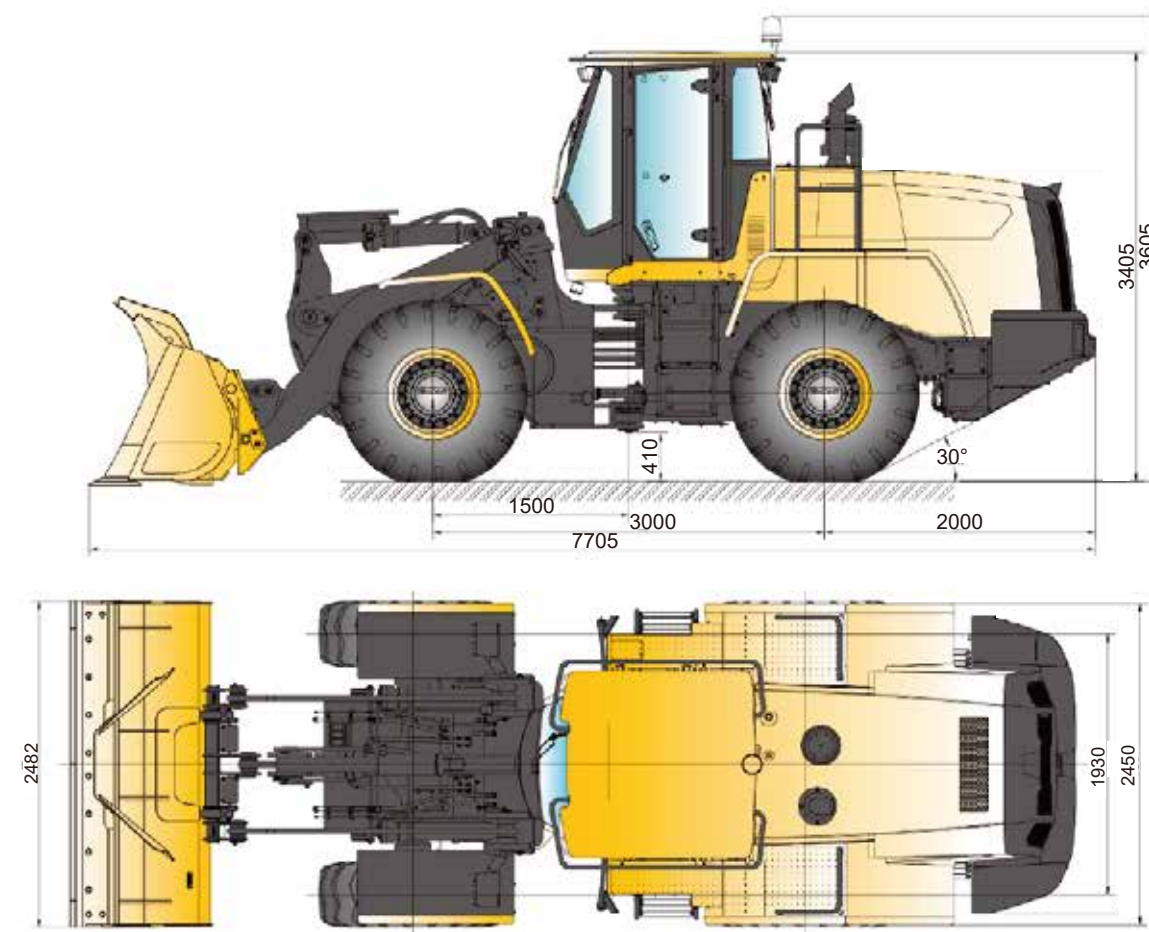
- ▶ High pressure and small displacement shorten the working circle time
- ▶ Integral distribution valve, manual operation, high system efficiency, energy saving and fuel saving.
- ▶ the pipeline is optimized and upgraded to facilitate installation and connection, and at the same time reduce the pressure loss of the pipeline and the heat generation of the hydraulic system of the whole machine, reducing failures.
- ▶ Optimized design of the working device adopts a Z-type reverse six-link structure with single rocker arm, short tie rod and horizontal boom cylinder, which has excellent operating performance and efficiency.



TECHNICAL SPECIFICATIONS

Program		Parameter (Metric)	Parameter (US)
Rated bucket capacity		2.4/m ³	2.49yd ³
Rated working load		4000kg	7716.18lb
Operating weight		13200±200kg	29762.41lb
Dumping height		3100mm	9.55ft
Dumping reach		1070mm	3.67ft
Wheelbase		3100mm	9.84ft
Track		2060mm	6.33ft
Minimum ground clearance		410mm	1.35ft
Overall length		7850mm	25.28ft
Overall height		3300mm	134.06in
Bucket width		2718mm	11.17ft
Maximum breakout force		140±5kN	29225.16lbf
Maximum traction force		140±5kN	21674.07lbf
Turning radius (Center of Tire)		6350mm	16.57ft
Boom lifting time		≤5.2s	5s
Total cycle time		≤9.0s	8.9s
Engine	Model	WP6G125E22	B6.7
	Rated power	129kW	134.13HP
	Declared rotating speed	2200r/min	2200r/min
Tyre		20.5R25	20.5R25
Drive Speed	Forward/Reverse 1	12/16 km/h	4.97mile/h
	Forward/Reverse 2	38 km/h	9.32mile/h

OUTLINE DIMENSIONS



OPTIONAL CONFIGURATIONS

- reversing image system
- ride control system
- emergency steering system
- low temperature start system
- automatic centered lube system
- closed rear fender
- machine protection in landfill
- lengthened boom
- various buckets (or customized)
- several attached tools



Optimum Services , XCMG Guaranteed



XCMG approved attachments



Genuine parts



Financial solutions



Maintenance contract



Telematics

Professional Integrated Complete Solutions

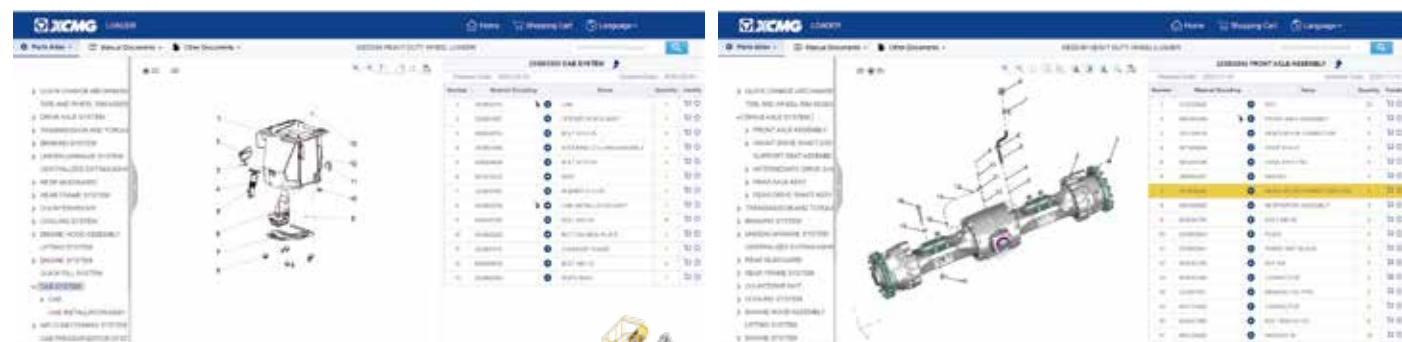
XCMG group has built a strong reputation based on the quality, reliability and durability of its construction machinery. What's more, XCMG has gradually established a service network to constantly provide its local integrated and highly efficient complete solutions for all customers.

Full Range of Services Ready for you

In order to respond to your needs as fast as possible, XCMG experts are on their way to your job site from one of our facilities near you. Full range of services are available in order to reduce your total cost of ownership and increase your revenue.



XCMG Global Spare parts System



Mobile cranes

Excavators

Aerial work platforms

Wheel loaders

Road machinery

