



XC7-SR08

— SKID-STEER LOADER —

All Rights Reserved

Materials and specifications are subject to change without notice.
Featured machines in photos may include additional equipment.
See your XCMG dealer for available options.

www.xcmg.com

XUZHOU CONSTRUCTION MACHINERY GROUP IMP. & EXP. CO., LTD

Add: No.1, Tuolanshan Road, Xuzhou Economic Developing Zone, Jiangsu, China 221004





OVERVIEW

- As the first new product of skid loaders, XC7-SR08 is configured with updated technology and performance oriented toward the domestic market and based on the international research and development platform, which is the optimal choice for multiple conditions including road construction/maintenance/cleaning, snow removal, building engineering construction, forestry, landscape architecture, agriculture, slop finishing/leveling, and elevation/transportation, etc.
- The XC7-S R08 features safety, reliability, advanced technology, and high efficiency, which is configured with multiple devices including the self-innovative radial elevating mechanism with strong power, undirectional leveling function, and high operating efficiency, the panoramic driving cab with standard FOPS & ROPS mechanism for safety and reliability, space capsule-type driving compartment with intelligent display screen and real-time electronic monitoring system of multi-mode switching, to ensure its harmony of design and performance with intelligent and comfortable experience.

PRODUCT ADVANTAGES

CORE TECHNOLOGY

Power drive system: The engine is imported from the famous brand with strong power and environmental protection, complying with national III emission, and maintenance-free chain wheel case.

Hydraulic system: The components used are international famous brands, with leveling of lifting arm, infinitely variable speed and smart locking of tools, centralized pressure measurement and parking braking.

Working device: XCMG self-innovative radial elevating mechanism with strong power and general fast-changing device.

Electrical system: Electro-hydraulic control, electrical interlocking security (interlocking surpass, parking brake).

Driving cab system: Integrated air conditioner, enhanced air inlet system, suspension seats, and functional integrated interior decoration.

GENERAL FEATURES

MAINTAINABILITY

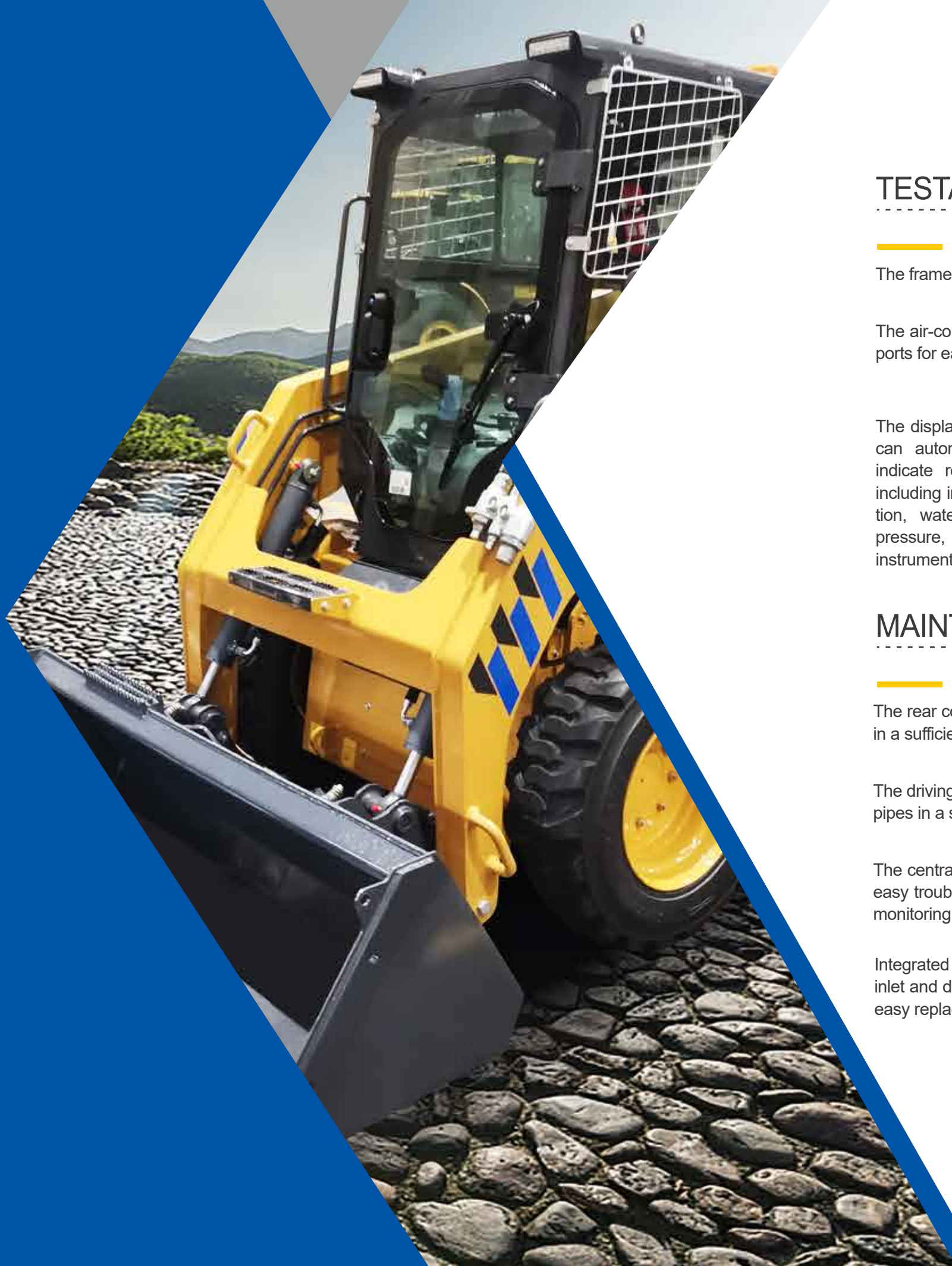
The rear cover and the upper cover can be fully opened for easy maintenance in a sufficient rear space.

The driving cab can be fully turned for easy maintenance of hydraulic parts and pipes in a sufficient space.

The central control box of the driving cab is configured with an access port for easy troubleshooting of circuit failures, as well as an internal LCD of real-time monitoring on the engine to indicate relevant failure codes.

Integrated maintenance-free chain wheel case with chains pre-tensioned, oil inlet and discharge port on the side and bottom of the case respectively for easy replacement of gear oil.





TESTABILITY

The frame is configured with the lateral hydraulic test interface for easy testing.

The air-conditioning compressor is configured with high and low-pressure test ports for easy system failure detection.

The display of the driving cab can automatically read and indicate relevant information including internal ECU revolution, water temperature, oil pressure, etc., no external instrument required.



MAINTAINABILITY

The rear cover and the upper cover can be fully opened for easy maintenance in a sufficient rear space.

The driving cab can be fully turned for easy maintenance of hydraulic parts and pipes in a sufficient space.

The central control box of the driving cab is configured with an access port for easy troubleshooting of circuit failures, as well as an internal LCD of real-time monitoring on the engine to indicate relevant failure codes.

Integrated maintenance-free chain wheel case with chains pre-tensioned, oil inlet and discharge port on the side and bottom of the case respectively for easy replacement of gear oil.

SAFETY

Safety warning signs on obvious positions of the machine.

The driving cab is configured with the internal safety seat, safety belt, and extinguisher.

The driving cab is configured with doors and the safety fence to prevent misoperation.

The driving cab is configured with a flameout moving arm declination system to lower the arm in case the machine is faulty.

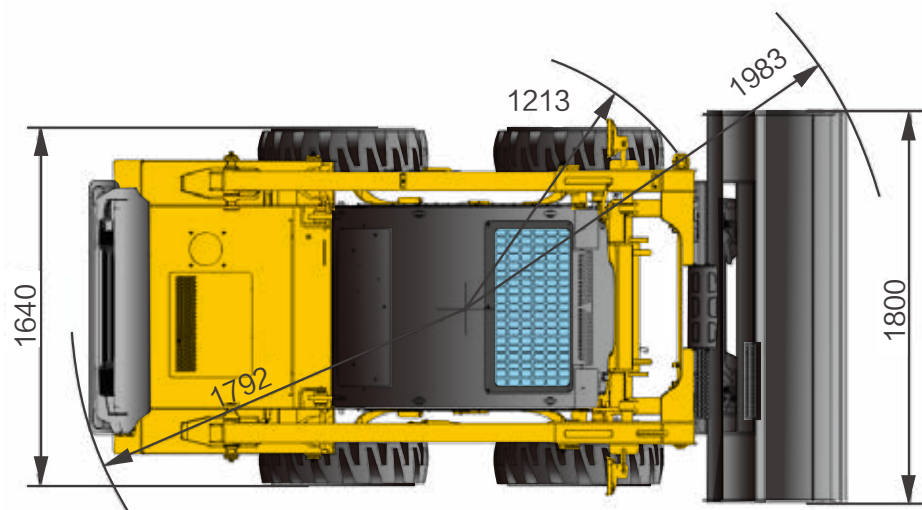
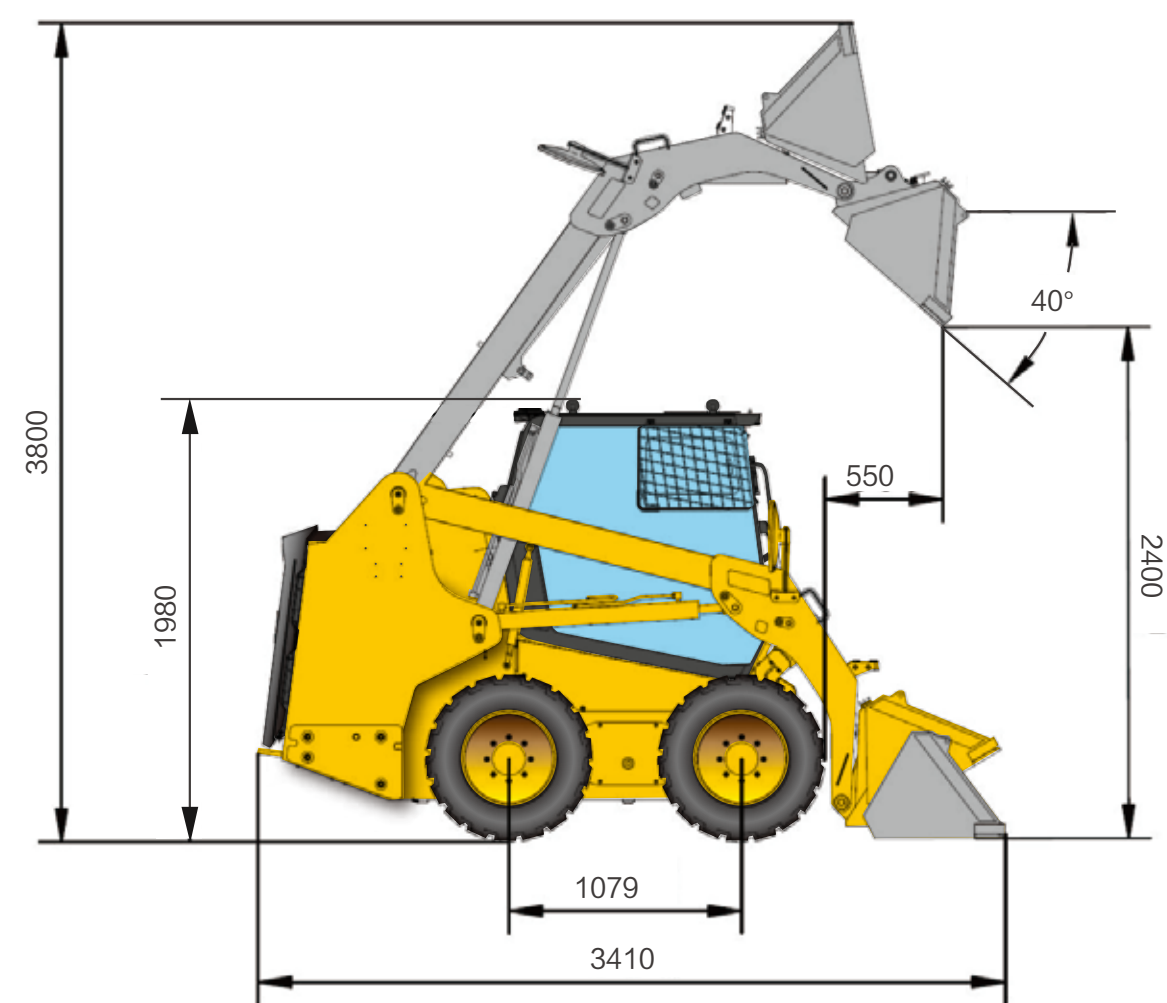
The driving cab is configured with a rear emergency escape window.

The moving arm has safety supports.

The ROPS & FOPS driving cab is configured with the external removable protection grid and safety lock.



OVERALL DIMENSIONS



MAIN PARAMETER

Description	XC7-SR08	Unit
Rated operating load	830	kg
Bucket capacity	0.45	m ³
Bucket edge width	1800	mm
Length with bucket	3465	mm
Machine weight	3210	kg
Cab roof height	1980	mm
Dumping height	2400	mm
Dumping distance	550	mm
Wheel base	1079	mm
Tread	1370	mm
Height of hinge at maximum lift height	3020	mm
Working height(fully lifted)	3800	mm
Max.breakout force	≥22	kN
Max.horse power	≥25	kN
Hydraulic cycle time-raise	5	s
Total hydraulic cycle time	10	s
Front tuning radius without bucket	1213	mm
Front tuning radius with bucket	1983	mm
Departure angle	23	°
Ground clearance	185	mm
Gradeability	23	°
Tyre size	10-16.5	
Overall machine dimension(L×W×H)	3410*1800*1980	mm
Engine Model	Yuchai YCF3075-T300	
Rated Power/Speed	75/55.8	kW/rpm
Fuel Tank	80	L
Hydraulic Tank	50	L
Standard flow	79	L/min
Optional high flow	125	L/min
System pressure	210	bar
Travel speed	I -gear(F/R)	13
	II -gear(F/R)	—
		km/h

MULTIPLE APPLICATIONS

bucket type	401005879	standard bucket	bucket capacity	0.45m ³	/	200
	401005165	4in1 bucket	bucket capacity	0.6m ³	/	235
	819980938	fork	bucket capacity	0.5m ³	20~30 L/min	418
	819980918	sweeper	sweep backward	maximum load	1t	/
transfer type	819980934	milling planer	working width	72"(1830mm)	60~80 L/min	480
	819980924	breaking hammer imported	working width	460mm	130~140 L/min	925
road construction	819980920	domestic breaking hammer		600mm	130~140 L/min	1010
	819980942	manhole cover planer		Ø68	/	
	819980939	inclined sweeper		Ø70	30~45 L/min	341
		snow plough	working diameter	Ø600~Ø750mm	/	
snow sweeping type	819980937	snow blower	sweep backward	working width	72"(1830mm)	80~120 L/min
	819980921	snow blower		84"(2130mm)	80~120 L/min	545
	819980935	disc type de-icer	working width	72"(1830mm)	/	575
	819980919	single arm digger		84"(2130mm)	/	295
	819980926	double arms digger		72"(1830mm)	120~150	312
	819980923	Industrial grab		84"(2130mm)	120~150	570
landscaping type	819980940		disc diameter	Ø560	/	600
		bulldozer plate	bucket capacity			110
	819980915		bucket capacity	0.04m ³	20~50	682
construction engineering type			working width	72"(1830mm)	20~30	510
				84"(2130mm)	20~30	580
	819980922		working width	72"(1830mm)	20~30	556

1, opening length:880; 2, flat/geometric capacity:0.46/0.58	
1, bucket teeth length:1070; 2, bucket teeth depth:32; 3, bucket teeth adjustable range:220-1540	
1, sweeping diameter:660; 2, brush quantity:36; 3, collecting bucket capacity:0.46; 4, actual sweeping width:1830	951×1890×715
1, milling width:450; 2, maximum milling depth:150; 3, maximum sidesway distance:600; 4, numbers of cutter:39	1070×1590×780
1, milling width:600; 2, maximum milling depth:150; 3, maximum sidesway distance:600; 4, numbers of cutter:48	1450×2117×680
	1376×1727×935
1, shank diameter:Ø70; 2, brand of hammer core:; 3, impact frequency:500-800bpm; 4, impact energy:≥700J	1376×1727×936
	1200×809×1692
1, deflection angle:±30°; 2, brush diameter:φ800; 3, brush quantity:36-37片; 4, material:Polypropylene steel wire brush	1200×809×1693
1, deflection angle:±30°; 2, brush diameter:φ800; 3, brush quantity:42-43片; 4, material:Polypropylene steel wire brush	/
1, deflection angle:±30°	1650×2163×870
1, deflection angle:±30°	1650×2500×870
1, largest distance of snow blowing:12m; 2, maximum loading height:3.3m; 3, rotation angle:200°;	1010×1830×978
1, largest distance of snow blowing:12m; 2, maximum loading height:3.3m; 3, rotation angle:200°;	1010×2130×979
1, blade diameter:φ560; 2, maximum icebreaking height:20	1120×1896×3458
	1120×2200×3458
1, maximum digging depth:2430; 2, maximum dumping clearance:1495; 3, rotation angle of bucket186°;	1270×1150×600
	/
1, maximum deflection angle:±30°; 2, maximum swing angle:±10°;	/
	965×1830×700

XC7-SR08 YOUR BEST HELP

— Drive axle

maintenance-free full hydraulic wet drive axle, safe and reliable

— Cab

FOPS&ROPS certified safe and comfortable cab with ergonomically designed interior to provide the driver with an excellent operating environment.

— Transmission

automatic power shift transmission, automatically adjust the loader gear to ensure that the loader is working in the most efficient and energy-saving state



— Intelligent hydraulic system

load-sensing variable hydraulic system, supply on demand, automatically adjust the supply of hydraulic system capacity, reduce fuel consumption

— Easy to maintain

The integral electric back-flip hood + upturnable rear baffle cover is convenient for maintenance service to overhaul the equipment.

— Tools

XCMG can provide you with a variety of tools to meet individual needs and improve production efficiency.

— Z-Linkage System

XCMG has deeply optimized the traditional Z-Linkage for great power in any position.

— Intelligent hydraulic system

Through the reasonable matching of engine and gearbox, the response of the whole machine is faster, and the fuel consumption of the whole machine is reduced by 10%,